

# Dual Retraction

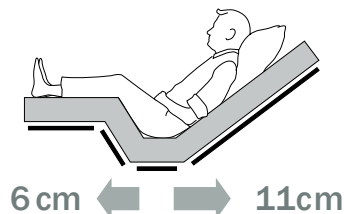
Standard feature on the Movita, Carisma and Sentida

## Effectiveness of double retraction confirmed



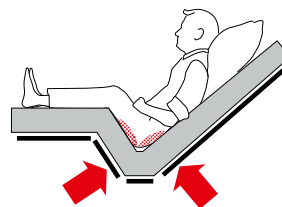
For years now, wissner-bosserhoff has been pursuing a practicable concept for reducing the risk of pressure injury: The dual retraction as a component of the BiNetic patient surface. With the dual retraction, not only the backrest but also the legrest is located further apart from the seat section, so that the surface is enlarged. In the meantime, there are results from pressure measurements which clearly show that there is less pressure with dual retraction (image 1b) than with single retraction and significantly less pressure than with the standard patient surface (image 2b).

### Dual Retraction



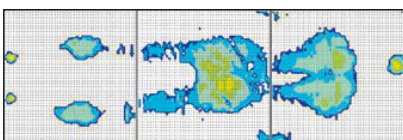
1a) BiNetic patient surface with dual retraction

### No Retraction



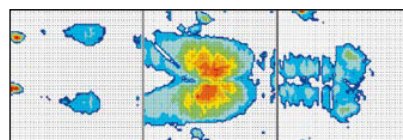
2a) Standard patient surface

### BiNetic Patient Surface



1b) with BiNetic patient surface with dual retraction

### Standard Patient Surface



2b) with standard patient surface

↓  
Double retraction =  
**17 cm**  
more space in bed

Dual retraction is not to be considered as the only means of pressure injury prevention, it can however effectively support existing options and, above all, it demonstrates that we should make use of all technical means at hand to improve pressure injury prevention.

**activeMEDICAL**

SUPPLIES > SOLUTIONS > SUPPORT

35 Southgate Avenue Cannon Hill QLD 4170 | P +61 7 3899 8887 | F +61 7 3899 8825

enquiries@activemedicalsupplies.com.au  
activemedicalsupplies.com.au